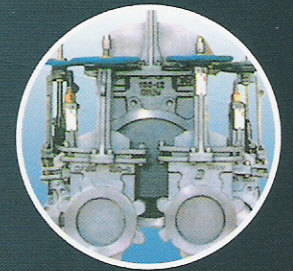
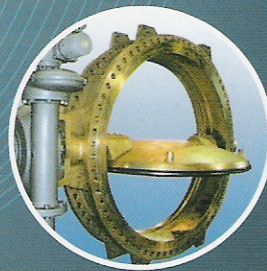


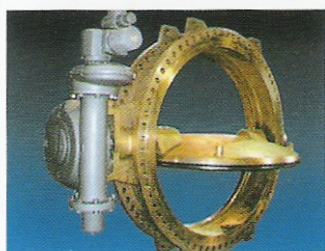
YI-HWAN

PRODUCT GUIDEBOOK



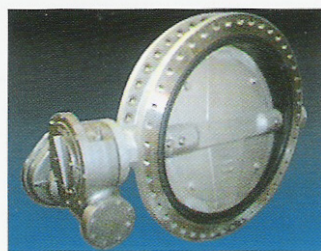
Product Information

YV-WW Series (Water Works Butterfly Valve) 4p



- Body Seat Type
- Disc Seat Type
- Body & Disc Rubber Lined Type

YV-RL Series (Rubber Lined Butterfly Valve) 8p



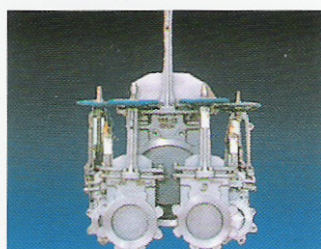
- Wafer Type
- Lugged Type
- Semi-Lug Type
- Flanged Type

YV-HC Series (High-Performance & Cargo Butterfly Valve) 5p



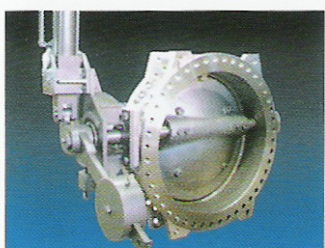
- Metal Seat Type
- Teflon Seat Type
- Fire Safe Type
- Resilient Seat Type

YV-KN Series (Knife Gate Valve) 9p



- Metal Seat Type
- Teflon Seat Type
- Resilient Seat Type

YV-NR Series (Non-Return Valve) 6p



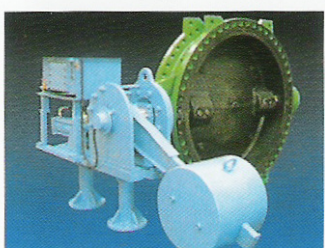
- Body Seat Type
- Disc Seat Type
- Body & Disc Rubber Lined Type

YV-DC Series (Duo-Check Valve) 10p



- Metal Seat Type
- Teflon Seat Type
- Resilient Seat Type

YV-CB Series (Combined Valve) 7p

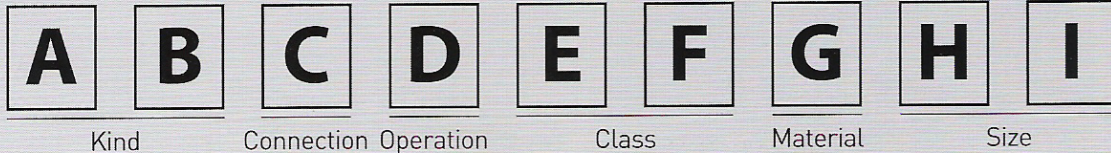


- Body Seat Type
- Disc Seat Type
- Body & Disc Rubber Lined Type

Various (Gate, Globe, Coupling, Etc) 11p



Figure Number Abbreviations



AB - KIND

RL : Rubber Lines Butterfly Valve
 HT : High-Performance PTFE Seat Butterfly Valve
 HM : High-Performance Metal Seat Butterfly Valve
 HF : High-Performance Fire Safe Butterfly Valve
 WW : Water Works Butterfly Valve
 NR : Non-Return Valve
 CV : Combined Valve
 KN : Knife Gate valve
 DC : Duo-Check Valve
 VA : Various Valve

C - Connection

W : Wafer
 S : Semi-Lug
 L : Lug
 F : Flanged
 B : Butt Welding
 S : Socket Type

D - Operation

L : Lever
 G : Gear
 C : Chain Wheel
 E : Electric Motor
 P : Pneumatic
 F : Free Stem
 H : H.Y.D Actuator
 O : Other

EF - Class

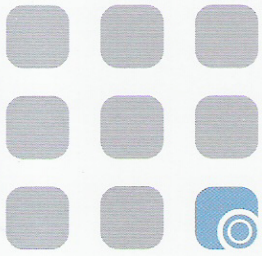
J5 : JIS 5K	A1 : ANSI 150LB
J0 : JIS 10K	A3 : ANSI 300LB
J6 : JIS 16K	A6 : ANSI 600LB
J2 : JIS 20K	A9 : ANSI 900LB
D6 : PN6	TD : AWWA C207 Class D
D0 : PN10	TE : AWWA C207 Class E
D6 : PN16	
D2 : PN25	

G - Trim

M : Metal
 T : Teflon
 R : Rubber
 F : Fire Safe

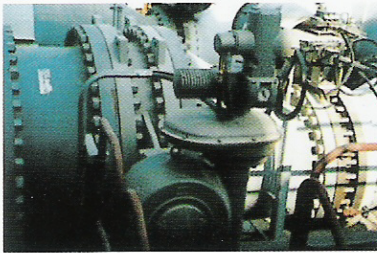
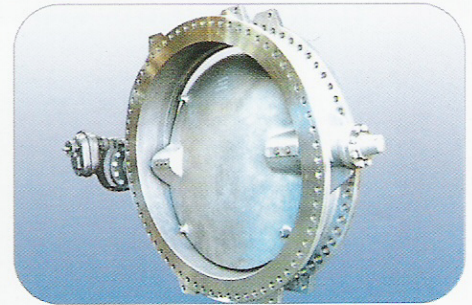
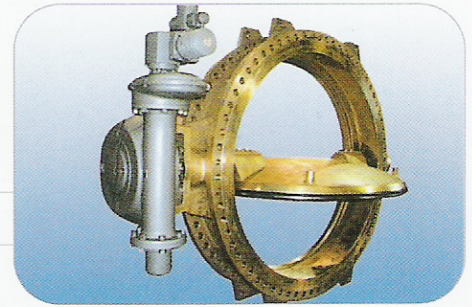
HI - Size

2" : 50A	22" : 550A	52" : 1300A
2.5" : 65A	24" : 600A	54" : 1350A
3" : 80A	26" : 650A	56" : 1400A
4" : 100A	28" : 700A	60" : 1500A
5" : 125A	30" : 750A	64" : 1600A
6" : 150A	32" : 800A	66" : 1650A
8" : 200A	34" : 850A	72" : 1800A
10" : 250A	36" : 900A	80" : 2000A
12" : 300A	38" : 950A	84" : 2100A
14" : 350A	40" : 1000A	96" : 2400A
16" : 400A	42" : 1050A	120" : 3000A
18" : 450A	44" : 1100A	140" : 3500A
20" : 500A	48" : 1200A	160" : 4000A



YV-WW Series

Water Works Butterfly Valves



Application

- Water works
- Power Plant
- Sewage plant
- Heating and Ventilation
- Desalination plant
- Chemical Industry etc.
- Air conditioning
- Shipbuilding Industry
- Irrigation
- Gas Plant

Production Range

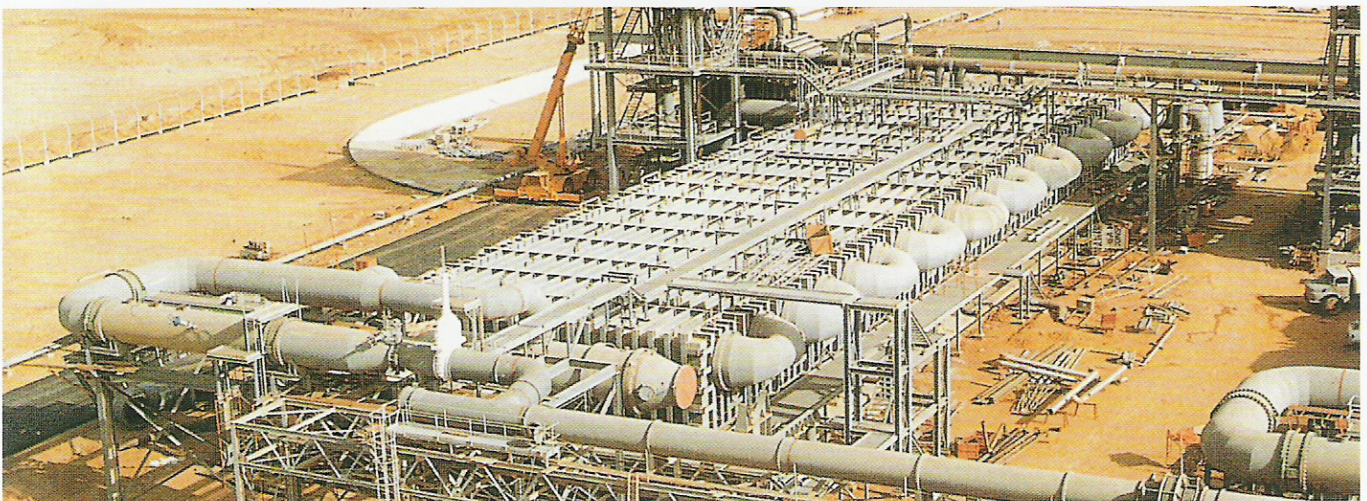
- Size : DN 100 to DN 4000 (4 inch ~ 160 inch)
- Working Pressure : Up to 40 bar
- Working Temperature : -20°C ~ +160°C

Connection Flange

- BS4504 PN10, PN16, DIN25, DIN2501, PN10, PN16, PN25/ANSI B 16.1 CL. 125LB & B16.5 CL. 150LB
- MSS SP44CL. 150LB. 300LB.
- AWWA C207 Class D & E
- ISO 2531 PN10 PN16, PN25, KS/JIS 10K, 16K and 20K

Face to Face Dimensions

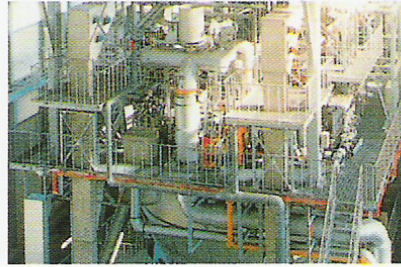
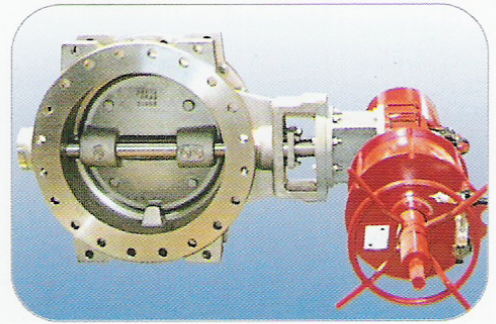
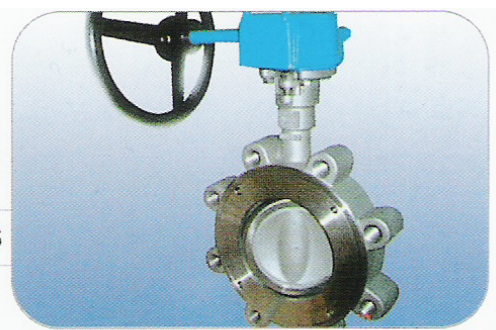
- Conform to BS5155, ISO 5752, AWWA C504, KS B 2333



▲ DooSan-Assir Desalination Plant

YV-HC Series

High-Performance & Cargo Butterfly Valves



Application

- Crude Oil
- Chemical and Petro-Chemical Plants
- Offshore Plant
- Ethylene
- LPG
- Petroleum Products
- Sea Water
- Steam
- Textile industry
- Water and Others
- Foundry
- Marine tankers-Ship building
- Food Plants
- Fire safer Piping system
- Sugar refining

Face to Face Dimensions

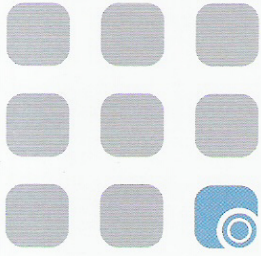
- Conform to BS5155, ISO 5752, MSS SP67 and API609

Production Range

- Size : DN 50 to DN 2400 (2 inch ~ 96 inch)
- Working Pressure : Up to 25 bar
- Working Temperature : -100°C ~ +450°C

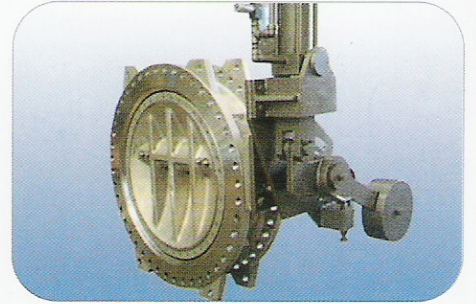
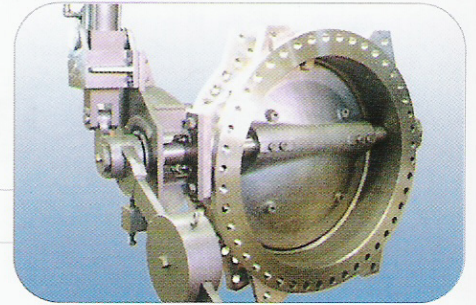
Connection Flange

- BS4504 PN10, PN16, PN25 and PN40
/DIN2501 PN10, PN16, PN25 and PN40
- ANSI B 16.5 CL. 150LB and 300LB
/MSS SP44CL. 150LB. 300LB.
- ISO 2531 PN10, PN16, PN25 and PN40
/KS/JIS 10K, 16K & 20K
- AWWA C207 Class D & E



YV-NR Series

Non-Return Valve



Application

- Water works
- Power Plant
- Sewage plant
- Heating and Ventilation
- Desalination plant
- Air conditioning
- Gas Plant
- Chemical Industry etc.
- Shipbuilding Industry
- Irrigation

Production Range

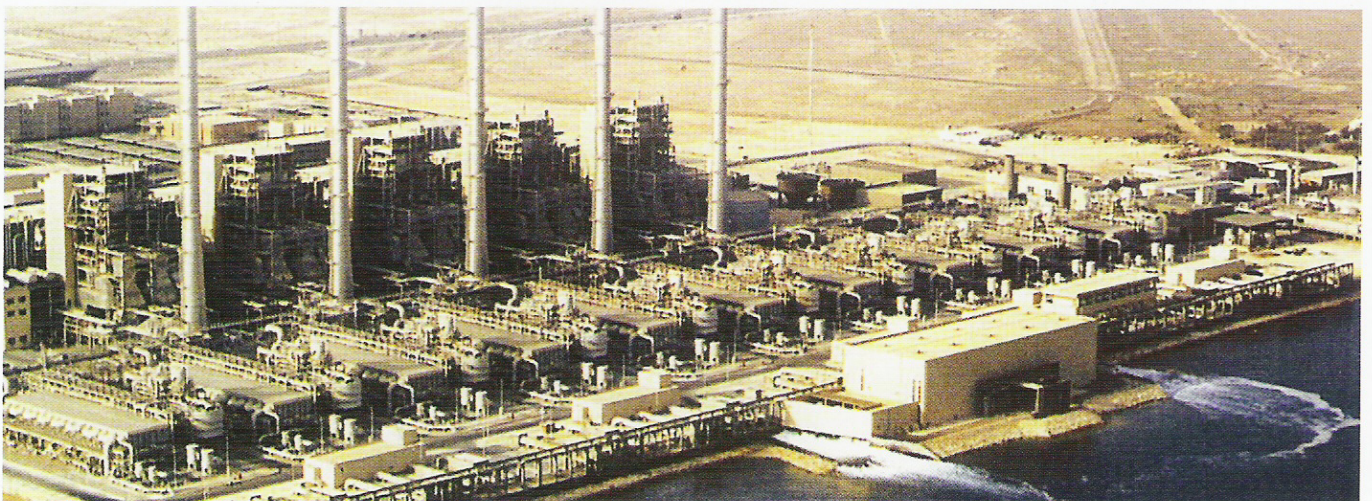
- Size : DN 80 to DN 2400 (3 inch ~ 96 inch)
- Working Pressure : Up to 30 bar
- Working Temperature : -20°C ~ +160°C

Connection Flange

- BS4504 PN10, PN16/DIN2501 PN10, PN16
ANSI B 16.1 CL. 125LB & B16.5 CL. 150LB
- MSS SP44CL. 150LB.
- AWWA C207 Class D & E
- ISO 2531 PN10 PN16 / KS/JIS 10K, 16K and 20K

Face to Face Dimensions

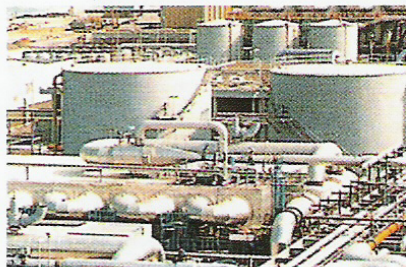
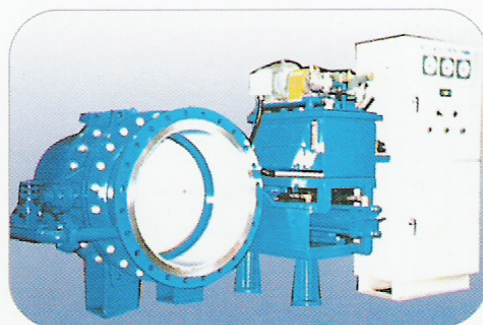
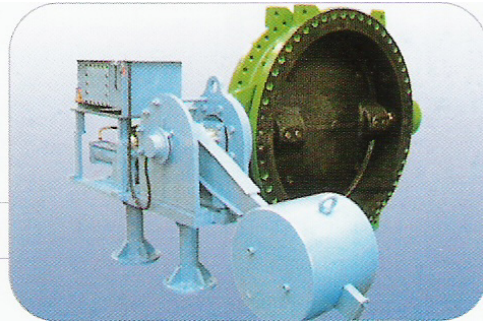
- Conform to BS5155, ISO 5752, AWWA C504,
KS B 2333



▲ Hyundai-Al-Khobar Desalination

YV-CB Series

Combined Valve



Definition

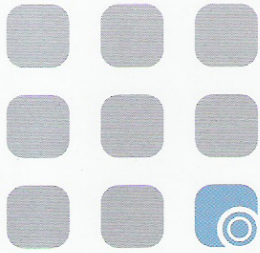
- Emergency valve can control the flow direction in order to prevent the breakage of pipes by the reverse flow due to the sudden rising of the flow speed. When ordered by a control device.
The closing speed of the valve disc can be adjusted.

Operation

- Opening valve
- Closing valve
- Keeping the valve open at the medium degree
- Emergency self-closing (adjustable disc closing time by two steps-site adjustment available)

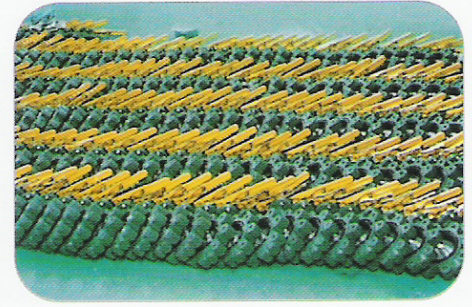
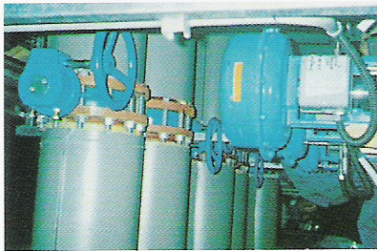
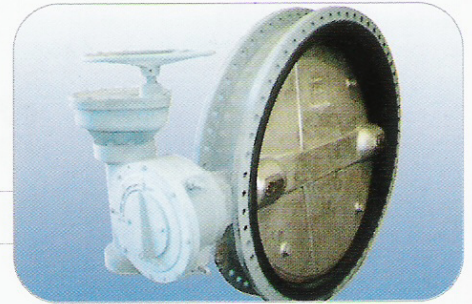
Features

- Emergency valve can be substituted for butterfly valve & check valve.
- Control the flow by keeping the valve open at the medium degree
- Adjustable the disc closing speed by two steps. When the valve close by position to prevent water hammering)
Can be closed quickly by emergency situation to prevent the reverse flow as general check valve usage.
- The cost of the installation and maintenance can be reduced.
- Free from shaking and noise.



YV-RL Series

Rubber Lined Butterfly Valve



Application

- Air conditioning
- Air line
- Chemical processing
- Power Plants
- Desalination plants
- Desulphurisation plants
- Drilling rigs
- Dry powder
- Food and beverage
- Gas Plant
- Heating line
- Mining industry
- Paper industry
- Sand handling
- Sugar industry
- Thermo technical water treatment
- Waste water
- Water and others
- Water works
- Ballast and bilge system
- Shipbuilding Industry

Face to Face Dimensions

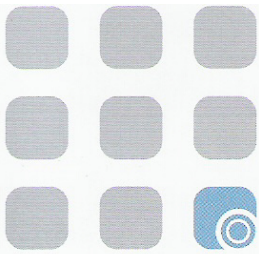
- Conform to BS5155, ISO 5752, MSS SP67, JIS B2032 and API609.

Production Range

- Size : DN 50 to DN 4000 (2 inch ~ 160 inch)
- Working Pressure : Up to 16 bar
- Working Temperature : -20°C ~ +160°C

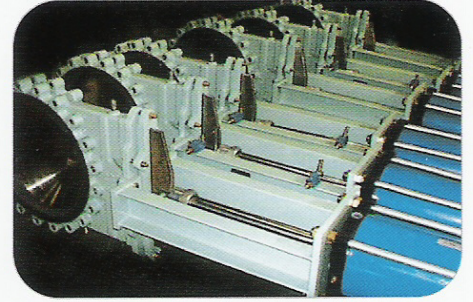
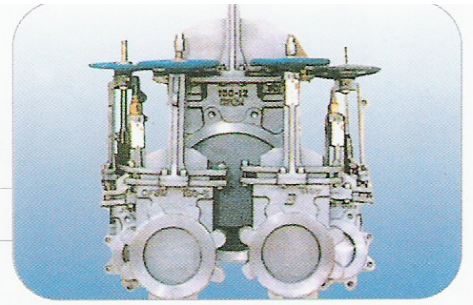
Connection Flange

- ANSI B 16.1 CL. 125LB & B16.5 CL. 150LB / MSS SP44CL. 150LB /
- AS2129 Table D & E / BS4504 PN6, PN10 & PN16 /
- BS10 Table D & E / DIN2501 PN6, PN10 & PN16 /
- ISO 2531 PN6, PN10 & PN16 / KS/JIS 5K, 10K, 16K & 20K
- SABS 1123 Table 1000/3 & Table 1600/3



YV-KN Series

Knife Gate Valve



Application

- Chemistry Plants
- Powder Transfer Plant
- Paper Manufacture Plant Field
- Dry Power
- Food and Beverage
- Power Plants
 - Pulverizer
 - Burner Side
 - ASH Handling System
 - FGD

Production Range

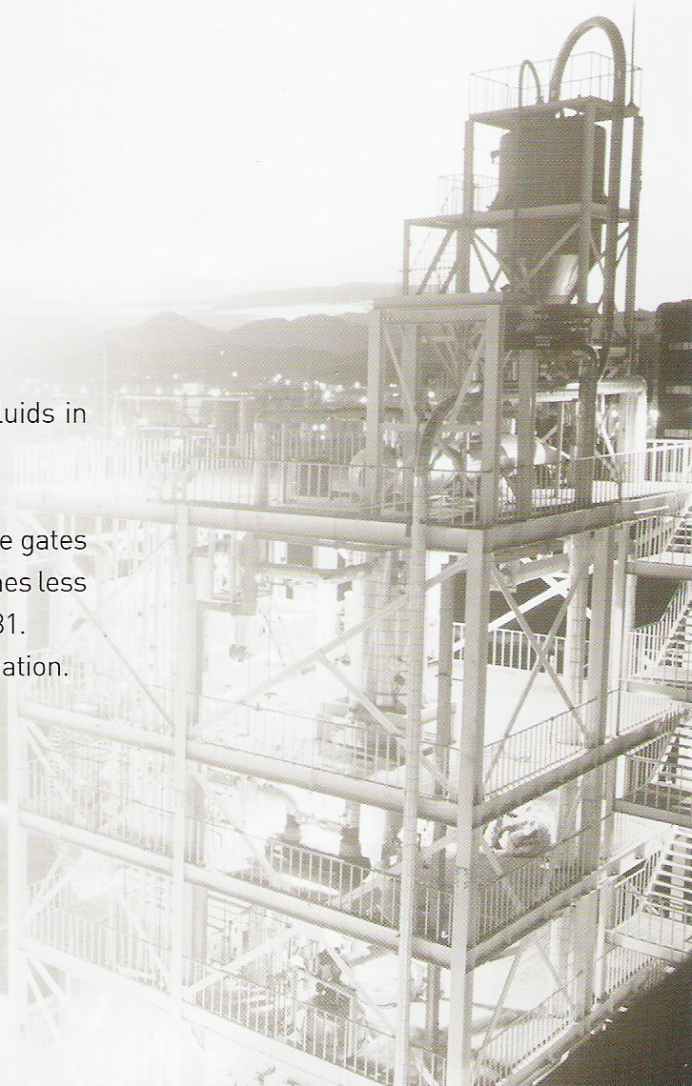
- Size : DN 50 to DN 1000 (2 inch ~ 40 inch)
- Working Pressure : Up to 10 bar
- Working Temperature : -100°C ~ +450°C

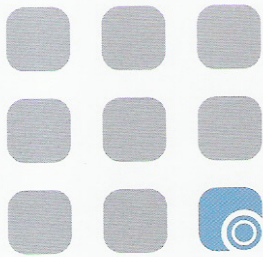
Features

- Designed to handle heavy slurry, pulp stock and corrosive fluids in process industries.
- MSS SP-81 for wafer type knife gate valves.
- These high quality metal seated knife valves with ground knife gates and lapped seating face have maximum leakage rated 4-10 times less than the permissible rates shown in TAPPI 405-8 & MSS SP-81.
- Available with lever, chain, gear, electric, air or hydraulic actuation.

Connection Flange

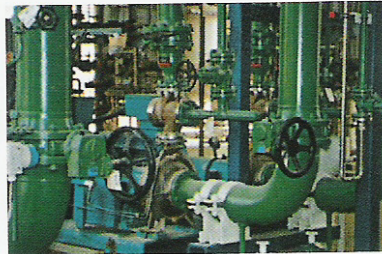
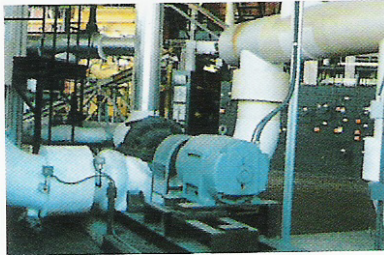
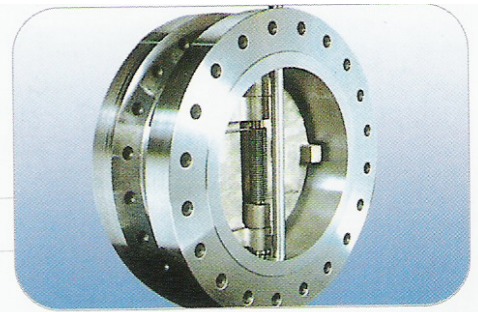
- 24 inch and smaller valves conform to ANSI B 16.5
- 26 inch and larger valves conform to API 605 or MSS SP-44 (ANSI B 16.47 series A or series B). Holes tapped.





YV-DC Series

Duo-Check Valve



Application

- Ballast and bilge system
- Desalination plants
- Drilling rigs
- Food and beverage
- Heating line
- Paper industry
- Sugar industry
- Waste water
- Chemical processing
- Desulphurisation plants
- Gas Plant
- Mining industry
- Sand handling
- Thermo technical water treatment
- Water and others
- Water works
- Power Plants
- Shipbuilding Industry

Production Range

- Size : DN 50 to DN 1800 (2 inch ~ 72 inch)
- Working Pressure : Up to 25 bar
- Working Temperature : -20°C ~ +160°C

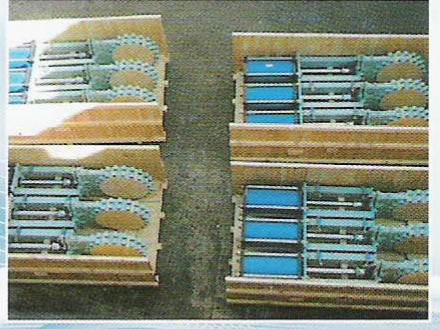
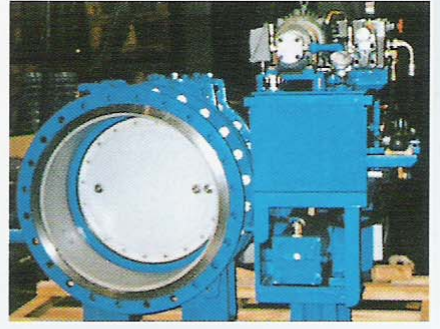
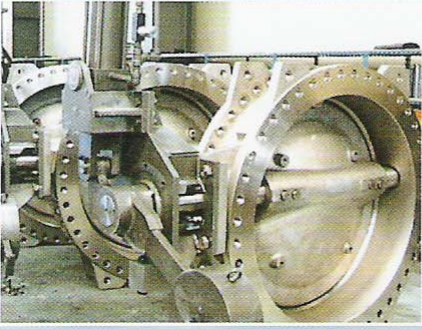
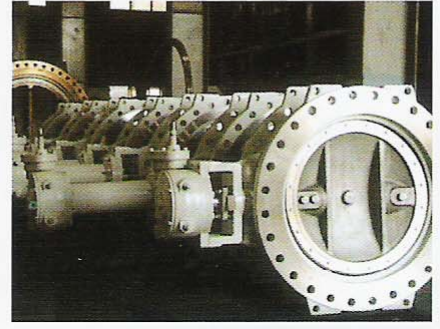
Features

- Duo Check valve actuator counter flow. It is more economical than other check valves due to small size.
- The shock from the water hammering and noise is small.
- The installation space can be saved.
- Useful for installation repairing and maintenance.

Connection Flange

- ANSI B 16.1 CL. 125LB & B16.5 CL. 150LB / MSS SP44CL. 150LB /
- AS2129 Table D & E / BS4504 PN6, PN10 & PN16 /
- BS10 Table D & E / DIN2501 PN6, PN10 & PN16 /
- ISO 2531 PN6, PN10 & PN16 / KS/JIS 5K, 10K, 16K & 20K

Yi-hwan Valve Line-up





이 환 산업

www.yihwan.co.kr

Office & Factory

1635-17, Songjeong-dong, Gangseo-gu, Busan, Korea

Tel. +82-51-832-0661 Fax. +82-51-832-0665

www.yihwan.co.kr